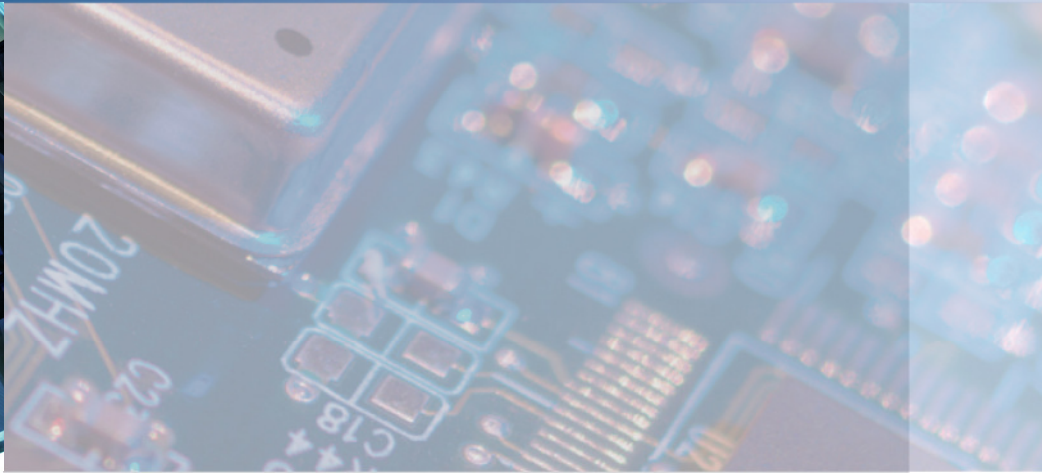
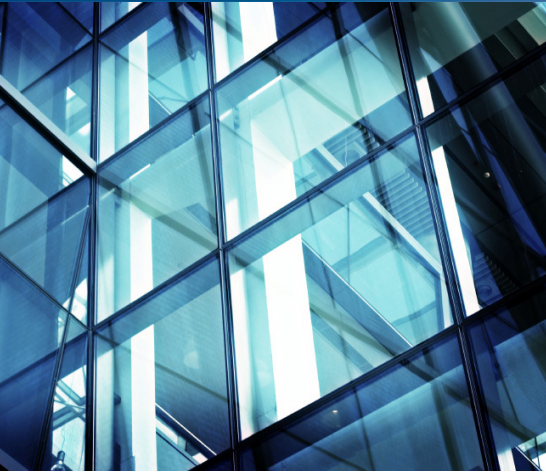




## PROJECT REFERENCE

ADMINISTRATION BUILDING  
BUILDING AUTOMATION



**Client:**

Confidential –  
We have signed a confidentiality agreement, please understand that we are unable to disclose the client in this case. Of course, your data will also be treated with the greatest possible care.

**Duration and Value:**

Commenced 03.2009  
Total construction value approx. 4.1 million €

|                                  |             |
|----------------------------------|-------------|
| Fire alarm system                | 612.000 €   |
| Intrusion detection system (IDS) | 67.000 €    |
| Power sourcing equipment (PSE)   | 101.000 €   |
| DDC                              | 685.000 €   |
| Building management system (BMS) | 1.000.000 € |
| Video                            | 650.000 €   |
| Network                          | 141.000 €   |
| Switchgear                       | 798.000 €   |

**Tasks:**

- Building control technology for five administration buildings and three data centres for a major German insurance company
- Construction of a master hazard management system with BACnet

**Services:**

- Engineering and design services for HOAI phases 1 – 9
- Hazard warning system (HWS), BMS, DDC, switchgear, PSE, Video, fire alarm system, IDS

**Highlights:**

- Hazard management system with building automation and DDC systems coupled via BACnet for approx. 15 000 data points, implemented using native BACnet
- Integration of a video management system for 150 PTZ cameras
- Integration of IDS and fire alarm system with a total of 12 000 detectors in the HWS
- Redundant design 2 TB FO network; Creation of a new IP-based DECT-PSE system
- New installation of approx. 170 new switchgear panels for measurement and control, fire alarm, smoke and heat extraction (SHE) and fire suppression systems
- Integration of an automatic ticket tool for BMS, HWS and video
- Implementation of a crisis management system in the HWS
- Retrofit during ongoing operation
- Tier III
- Infrastructure in line with Tier IV